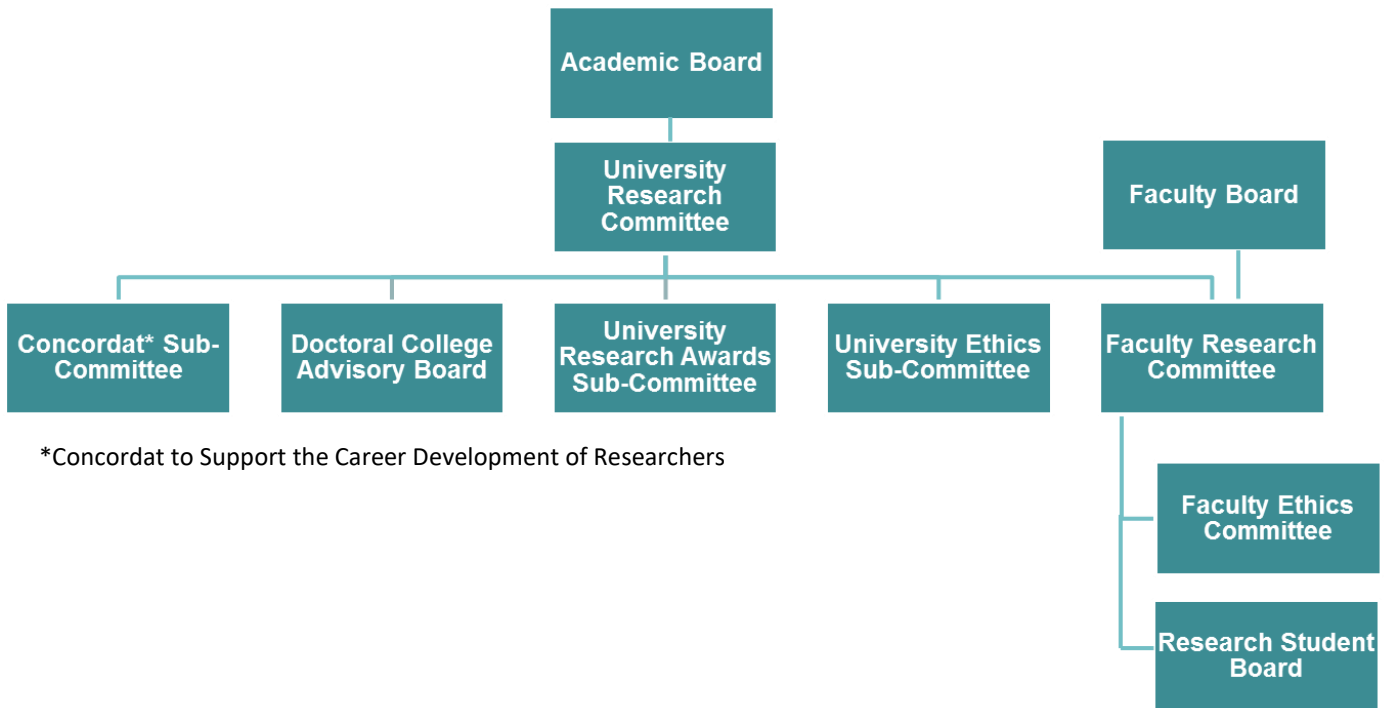


Research Governance & Management

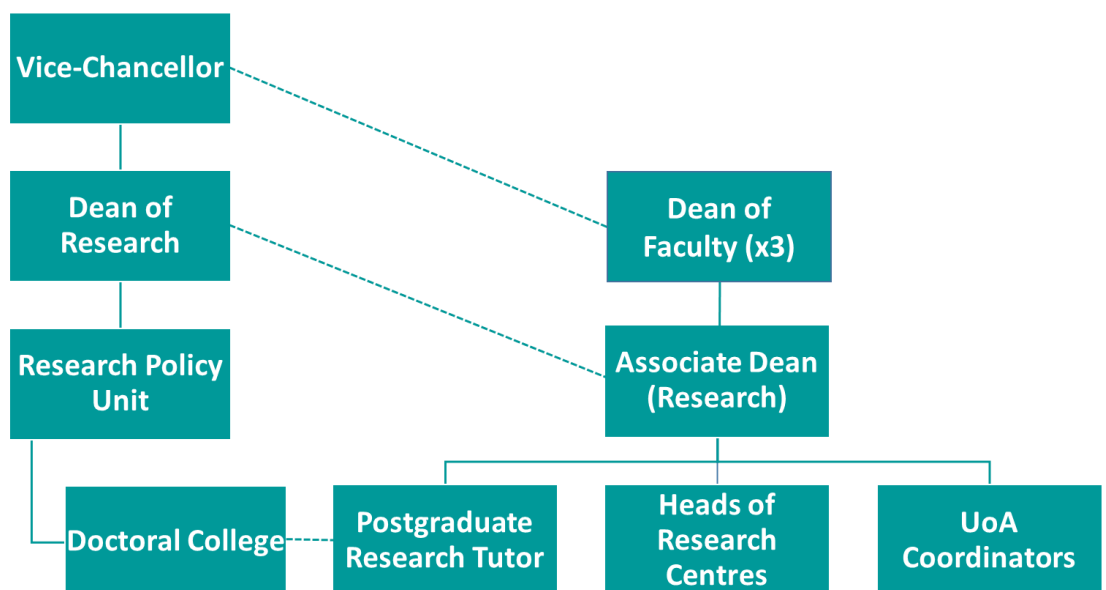
1) Governance

The University Research Committee together with its sub-committees oversees all research activities at the University. Each Faculty has a Faculty Research Committee as a sub-committee of Faculty Board to oversee research activities in the Faculty. The Faculty Research Committee has sub-committees that mirror those of the University Research Committee



2) Management of Research

University-wide strategic oversight for Research activity at the University of Wolverhampton is provided by the Vice-Chancellor.



University Level Management of Research

Dean of Research

The Dean of Research is the Head of the Research Policy Unit, oversees the University's Doctoral College, and is responsible to the Vice-Chancellor.

Research Policy Unit

The Research Policy Unit develops, implements and monitors the University's research strategy, in collaboration with Faculties. It is responsible for research ethics, research governance, policy, management and reporting of research-related information and dissemination of institutional research publications and other communications. The Research Policy Unit oversees the management of institutional submissions to research assessment exercises, statutory returns, coordination of research and management of institutional strategic research investments.

Doctoral College

All University PGR students are members of the Doctoral College. The Doctoral College coordinates and, in collaboration with the Faculties, delivers a comprehensive programme of research training and development for PGR students and staff, coordinates the University's Early Researcher Award Scheme, research student representation, organises University-wide research events and conferences, and advertises faculty research events across the University. The Director of the Doctoral College reports to the Dean of Research.

Faculty Level Management of Research

Dean of Faculty

The Dean of Faculty has overall responsibility for research within a Faculty.

Associate Dean with responsibility for Research

Each Faculty has an Associate Dean who will have responsibility for research.

REF Unit of Assessment (UoA) Coordinator(s)

Each REF Unit of Assessment has at least one coordinator who is responsible for preparing the REF submission in line with the funding bodies' guidance. The UoA coordinator(s) report to the Faculty Associate Dean with responsibility for research, and via the REF Strategy Panel to the University Research Committee.

Research Institutes and Centres

Research Institutes and Centres are the University's formal research units. Their governance and management is in accordance with the guidelines approved by Academic Board.

Postgraduate Research Student Management

Postgraduate Research Tutor(s)

Each Faculty has a Postgraduate Research Tutor(s) who is responsible for admission decisions and monitoring related to postgraduate research students within the Faculty, in line with the Research Degree Regulations and associated handbooks. The Postgraduate Research Tutor reports to the Faculty Research Student Board and the Research Awards Sub-committee of URC.

Research Support Tutor(s)

Each Faculty has a Research Support Tutor, who is independent of supervisory teams and provides advice and guidance to Research Students on general matters, including but not limited to welfare and support facilities, pastoral support, counselling, careers and finance in the Faculty and the University.

Research Skills Development Tutor(s)

Each Faculty has a Research Skills Development Tutor to coordinate the Faculty's skills development programmes, research seminars and events for Research Students and liaison with the Doctoral College.