

Centre for Applied Research and Education in Dementia

*‘Working together to improve dementia care’*

**Strategy 2015-20**

Dementia is one of the biggest challenges facing our nation today. Some 670,000 people in England are believed to be living with dementia including 3,600 in Wolverhampton with someone diagnosed with the condition every four seconds worldwide.

The Centre for Applied Research and Education, **CARE in Dementia**, is the focus for the University’s contribution in helping to improve the outcomes for people living with dementia by building on our recognised commitment to working in partnership and our ambition to be a progressive and influential sector leader.

The Centre will achieve this by being the primary focus for decision making, information sharing, education, learning and research within the University. The Centre will provide a clear and identifiable point of contact and centre of excellence within the University for dementia work. It will be a single portal of entry for our partners, users and carers who wish to access information about the University’s contribution and offer on dementia. The Centre works to oversee and progress the dementia educational offer at the University, in partner organisations, and in providers of dementia care services.

The Centre forms a part of the Faculty of Education, Health and Wellbeing but brings together representatives from across the University and from partner organisations who have a shared interest in dementia and are seeking to improve outcomes for people living with dementia. By working with people living with dementia, their families and our communities we seek to enable them to live well.

Through research, education, consultancy and scholarship, we make a cutting-edge contribution to building evidence-based practical ways of working with people living with dementia and their families that enables them to live well.

At the heart of our ambition to provide help to improve outcomes for people living with dementia lies:

- Client and Carer Engagement
- Service Evaluation and Innovation
- Research
- Bespoke Training and Education
- Contribution to Partnership Initiatives

To deliver our strategy for CARE in Dementia we have set a series of aims and objectives which we believe represent an innovative, pioneering and forward looking contribution to work on Dementia.

### **Continuing Professional Development**

**Aim:** To provide and promote dementia specific courses and programmes within the university for people with dementia, carers and the workforce.

**Objectives:**

- Identify and promote dementia education across specific programmes and courses.
- Collaborate with course and module leaders to determine where dementia education/training sits within their courses.
- Increase the number of modules with dementia content.
- Design and facilitate the delivery of dementia education/training to meet the requirements of national dementia competency frameworks.
- Collaborate with research colleagues to ensure new evidence is embedded into programmes and the transfer of knowledge is evident in course content.

### **Enterprise**

**Aim :** To be aspirational providers of specialist dementia education and training programmes.

**Objectives:**

- Collaborate with internal and external partners to determine organisational need.
- Design and tailor bespoke training packages to meet partner organisational needs that comply with national dementia competency frameworks.
- Facilitate the accreditation of Dementia Specific Modules and Courses provided both internally and externally by and with our partner organisations.
- Evaluate the impact of training delivered both internally and externally.

### **Research**

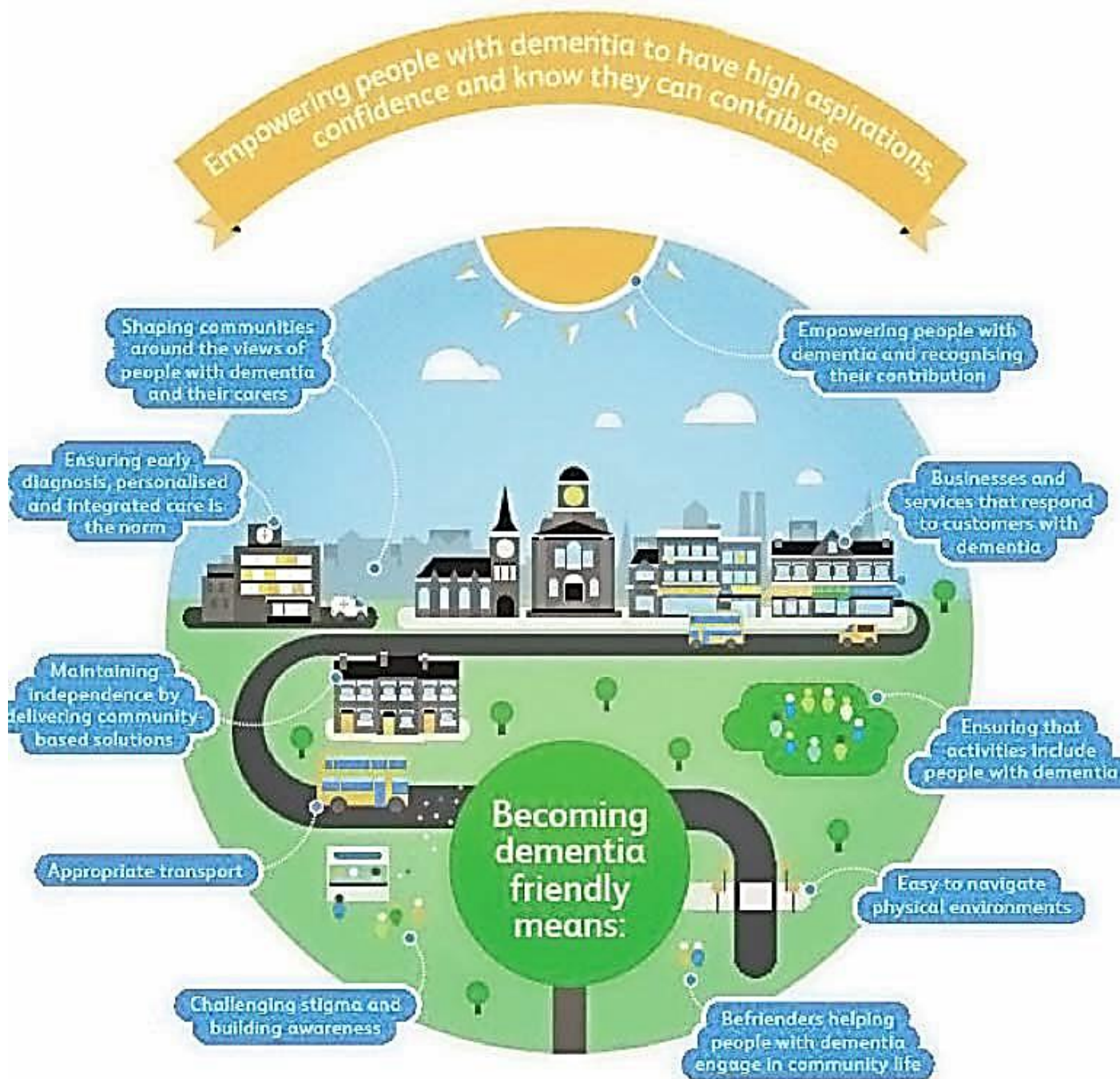
**Aim:** To promote high quality evidence-based and valuable research in dementia

**Objectives:**

- Collaborate with cross-Faculty and external partners to develop high quality and evidence-based dementia research proposals.
- Improve networking opportunities to connect researchers with joint interests in dementia research.
- Work with Enterprise and Project Support colleagues to identify funding sources and topic-specific calls for applications.
- Document the impact of dementia research and maintain a portfolio of projects and outputs across the University.
- Build income for reinvestment in dementia research including building capacity and research support.

These aims and objectives form the basis of our work plans during the coming years.

The University of Wolverhampton is a founder member of Wolverhampton Dementia Action Alliance and is committed to the aim of improving the lives of people with dementia in Wolverhampton by becoming a Dementia Friendly City.



**Figure 1. The Wolverhampton Joint Dementia Strategy 2015-17.** Available at:

<http://www.mysurgerywebsite.co.uk/website/M92024/files/Wolverhampton%20Joint%20Dementia%20Strategy%20v2.pdf>

**Examples of research projects:** Smart poster project in collaboration with the Wolverhampton Council which seeks to evaluate the use of smartphone technology in dementia awareness throughout the community; Chen's work is examining people at risk and care of dementia in China. Willoughby (RWT), Sque, Chen and Clifford have an award from Rotha Abraham Bequest to examine: *"The efficacy and outcomes of CQUIN screening and impact on dementia diagnosis in patients aged 75 and older admitted to hospital for emergency unplanned care."*

**Teaching:** We have a specific Dementia module (Concepts in Dementia Care) which is run at levels 6 and 7. Dementia now also features on sport and social care programmes.

**Enterprise:** We have the two-day Dementia Champions training course and one-day Person First training (dealing with distress), which are currently being evaluated, and we are able to provide bespoke training for external organisations. We do go to some conferences to promote this.

**Public engagement:** Endorsed by the VC the University works with the City of Wolverhampton Council and a range of organisations to raise awareness about dementia particularly in Dementia Awareness Week 15-21 May 2016.

**For more information on CARE in Dementia:**

<http://www.wlv.ac.uk/research/research-institutes-and-centres/centre-for-health-and-social-care-improvement-chsci/care---centre-for-applied-research-and-education-/>

