



STUDY SEMESTER ABROAD SCHOLARSHIP



University of Wolverhampton



University of
Wolverhampton
has been awarded
4 Stars overall.



Accredited courses

Many of our courses lead students into full or partial professional accreditation.



Long and successful history

We've been providing opportunity and academic excellence for over 190 years.



We're commended!

We've been awarded a commendation – the highest accolade – in our most recent assessment by the Quality Assurance Agency.



Affordable city

Make your money go further compared to other cities in the UK*.



Great transport links

We are based in the heart of the UK



96% graduate employability

Plus, 73% of our UK graduates were in highly skilled professions*



Biggest ever investment!

Our 5-year, £250 million investment plan is improving student life in many ways, from course content to computers.



World-leading research

Our research has impact on your studies, and on real life.

*numbeo.com

*Graduate Outcomes survey results 2020.

#All of our Research Centres submitted in the most recent Research Excellence Framework exercise had world-leading elements.



The Course

The Study Semester Abroad Scholarship (UK) programme enables students from overseas universities the opportunity to study a semester in English at the University of Wolverhampton..

- Study modules on a British university undergraduate degree course.
- Gain credits from your home university or study with us postgraduation.
- Develop your English language skills.
- Experience living in another culture, develop confidence and independence.

Overview

Students on the Study Semester Abroad Scholarship (UK) programme will be taught on a degree course by highly qualified staff in classes where they will interact with British and international students. They will then be able to take advantage of the facilities of a modern British university while experiencing life in the UK.

Outline

There are two ways you can study, depending on your academic and English levels.

Undergraduate programmes

The University has a number of specialist Schools and Institutes split across three campuses and faculties that teach courses covering a wide range of academic interests designed to meet the needs of today's students.

On the Study Semester Abroad Scholarship (UK) programme, you can choose and gain credits from any first or second year module related to your area of interest (subject to availability and academic level). Your chosen modules do not have to relate to your major in your home university, but home universities may stipulate that modules must correspond with your degree subject for credit purposes. Students will be guided on arrival as to appropriate modules based on their academic and language levels.

Our University prospectus shows the complete range of our courses with details and descriptions to help you make your choice. You must choose to study two academic modules, plus one English language or academic skills module. In some cases 3 academic modules may be possible. Please check with your home university.

You will be tested on arrival, placed on an English module that corresponds to your language ability and given help to find the appropriate academic modules.

*Please check our course guides.
(For example some courses run by the Faculty of Engineering have one year modules so single semester study would not be available).



English language requirements

Applicants must provide a test score or letter from your home university confirming what your levels are compared to the Common European Framework of Reference for Languages (CEFR) equivalencies.

AT THIS LEVEL	CEFR	IELTS	TOEFL PAPER BASED TEST	TOEFL CBT	TOEFL EBT	TOEIC
You can join academic modules from the undergraduate programme	C1	*7	600	250	100	605-780
		*6.5	575	232	90	
	6	550	213	80		
	5.5	525	196	70		

*If you want to study 3 academic modules, you may have to do a Wolverhampton English Proficiency Exam or provide IELTS documentation before you arrive to evidence your English proficiency. Additional charges may apply to 3 academic modules.

** Some students who wish to study business may have to do solely academic modules as the Business School run two 30 credit modules instead of the three 20 credit modules run on other courses.

**Some modules in the School of Art are offered over two semesters and are therefore not available for this programme. Please check module availability before you apply.

Start Dates

Semester 1 Academic Programme

- Start date: September to January

Semester 2 Academic Programme

- Start date: January to May

Please check the website for up-to-date fees, visit: www.wlv.ac.uk/studysemak

Please note that the fees and accommodation costs are subject to an annual increase, usually in line with inflation.

Due to COVID-19 the format of the course and dates may alter, please email the Course Leader to check for any changes, email adam.yardley@wlv.ac.uk



Accommodation

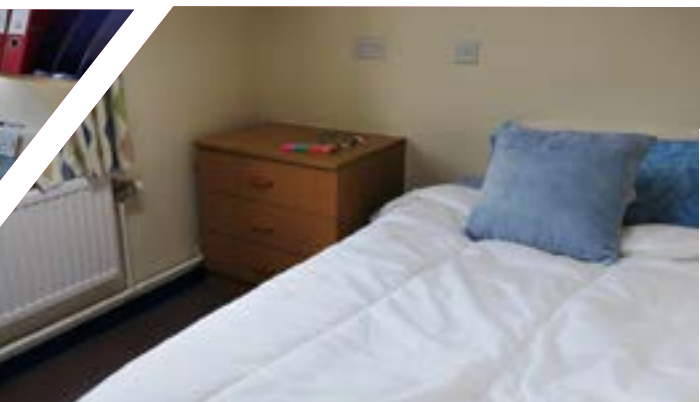
Students will typically stay in halls of residence a short walk from classes and enjoy a good standard of accommodation that includes:

- Private room with en-suite bathroom and Wi-Fi access
- Shared, fully-furnished kitchen and living areas – 5 students per kitchen
- Use of self-service laundry facilities

Students can choose to buy breakfast and lunch on campus, or prepare food themselves in their kitchens.

Facilities

- On-campus security
- Train station 10 minute walk away, and shopping centre 15 minutes



Location

The University of Wolverhampton is well positioned to explore the rest of the UK and beyond.

By train:

- Birmingham – 20 minutes
- Manchester and Liverpool – 1 hour 20 minutes
- London - 1 hour 40 minutes
- Edinburgh – 4 hours 30 minutes
- Birmingham Airport - 40 minutes

By plane:

Paris, Amsterdam, Berlin and Barcelona all less than 2 hours' away



How to apply

Find further information and an online application form at:

www.wlv.ac.uk/studysemak

Email: international@wlv.ac.uk

Tel: +44 (0) 1902 322 474

University of Wolverhampton
Global Opportunities Office
The George MG103
Wulfruna Street
Wolverhampton WV11LY
United Kingdom

Please note that this programme is aimed at 18 year olds and over.

